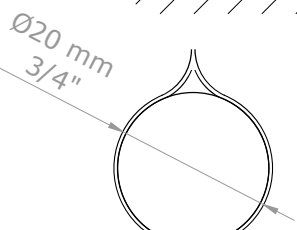
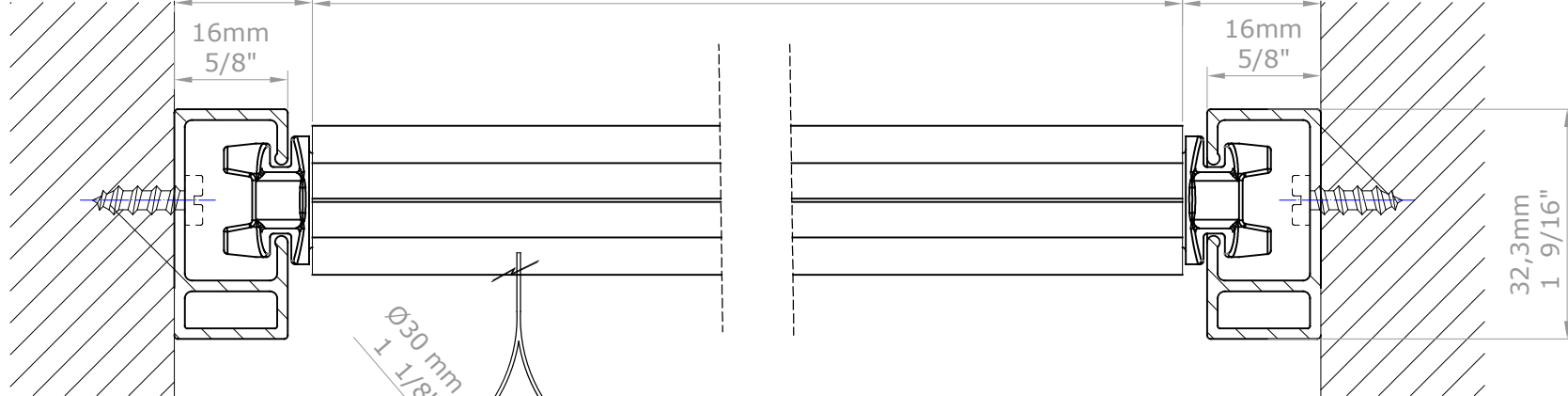
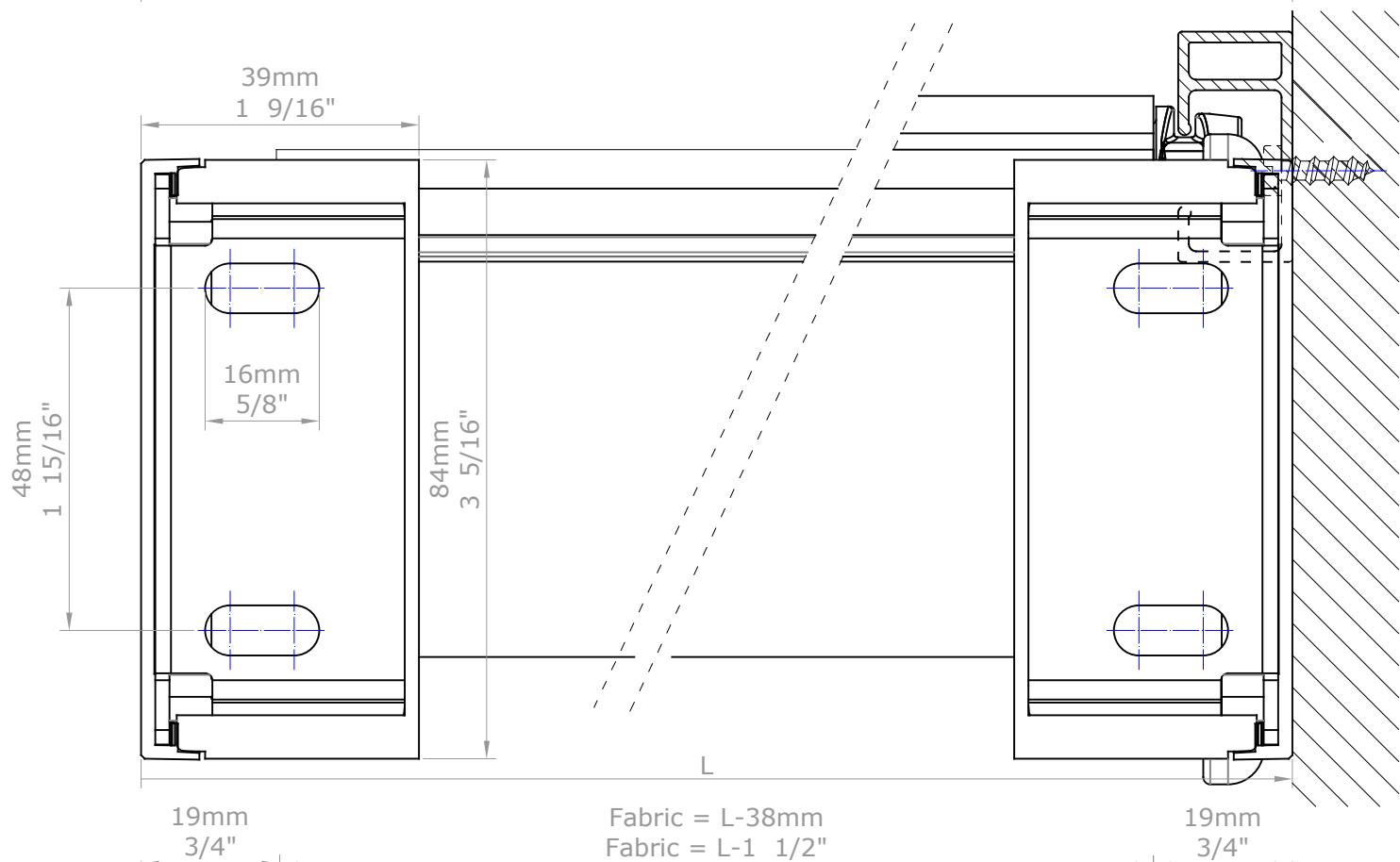
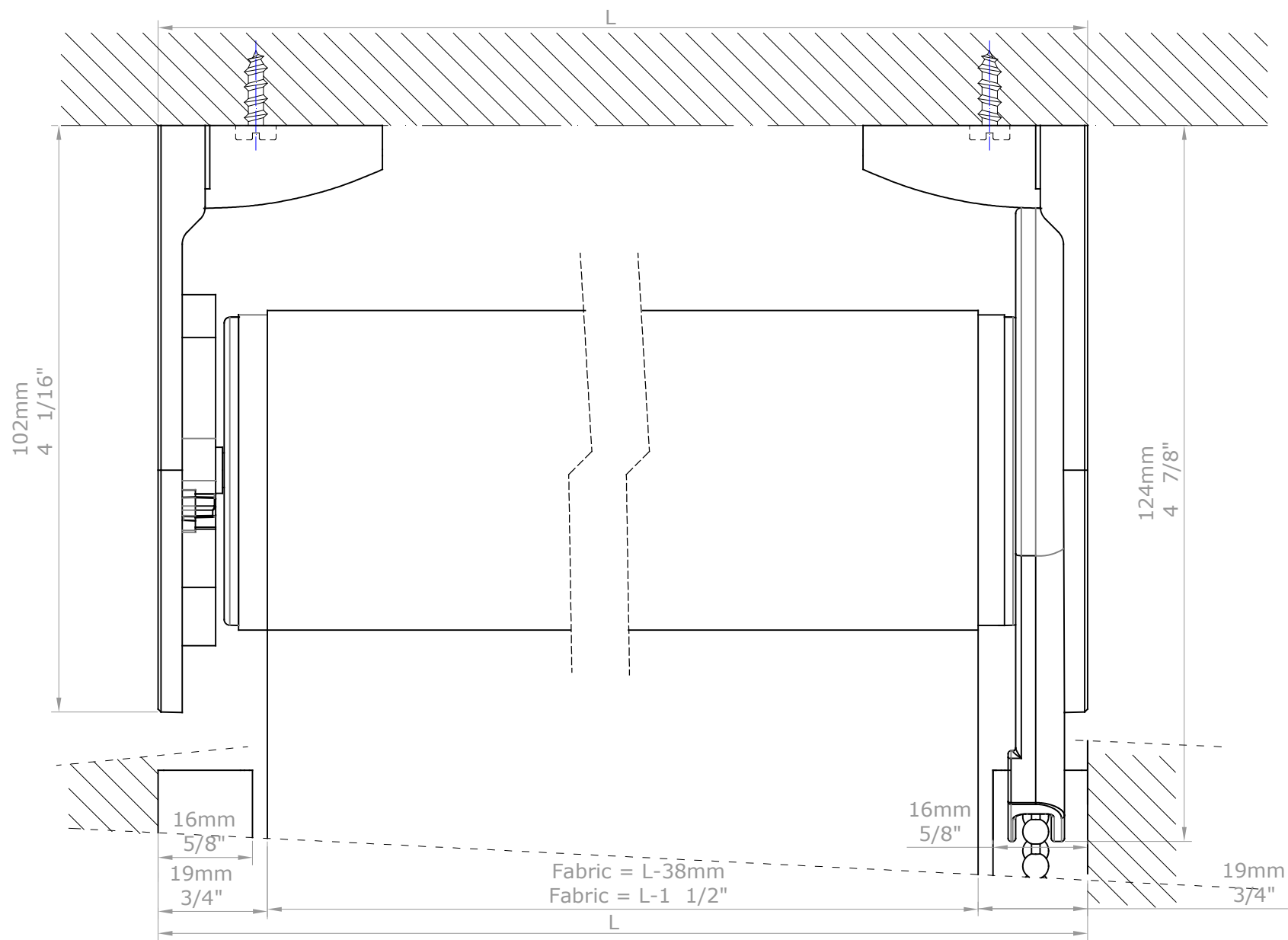
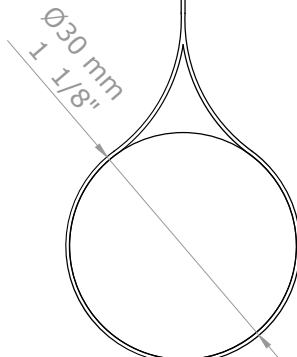


| | | | |
|------------|---|-----------------|-----|
| D. REVIS. | | BANDALUX | |
| REVISION | 1 2 3 4 5 6 7 8 9 | | |
| DATE | 29-01-2018 | PLANE Nº | |
| DESIGN | Miquel P. | FORMAT | A-3 |
| SCALE | Rolling blind Premium big size (II) chain U-301 guided Ceiling installation, lateral installation. Mechanism: VTX30 Bottom rail: round hembar 3/4" (Ø20mm) Tube 2 3/16" (Ø55mm) | | |
| 1/1 | | | |

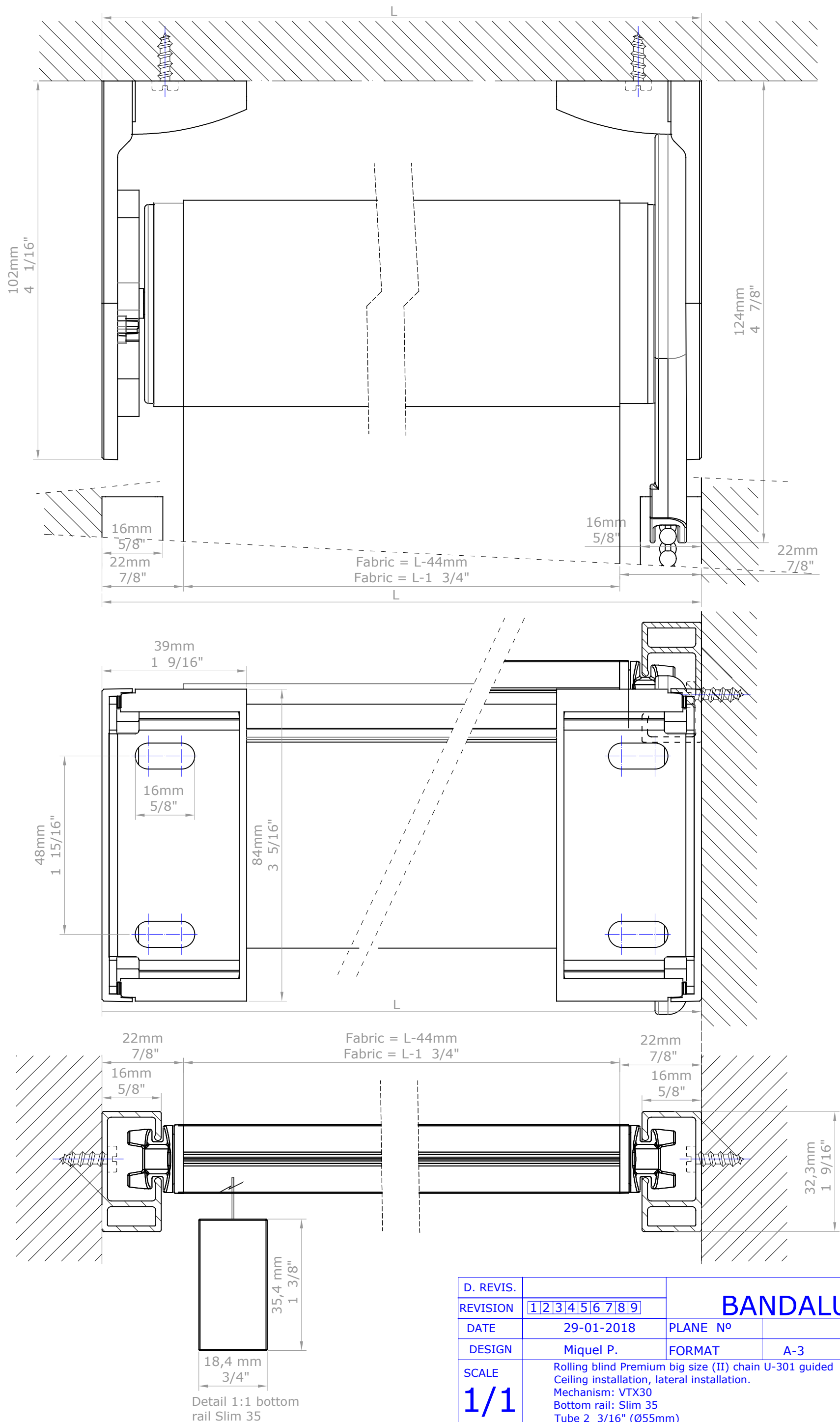


Detail 1:1 round hembar
3/4" (Ø20mm)

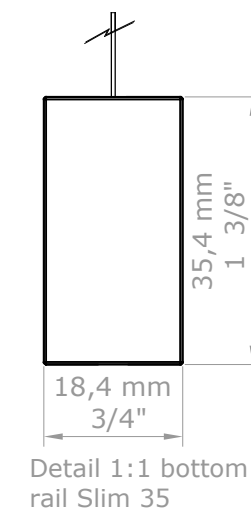
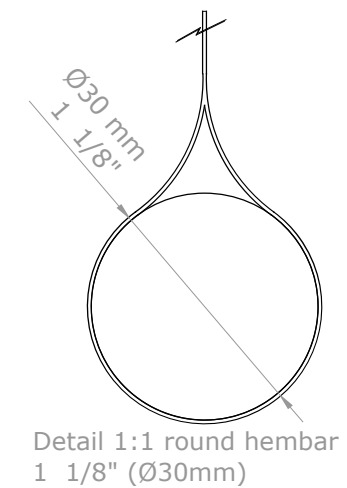
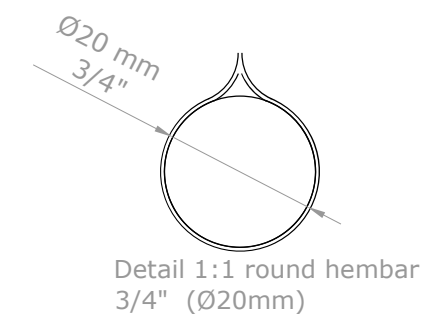
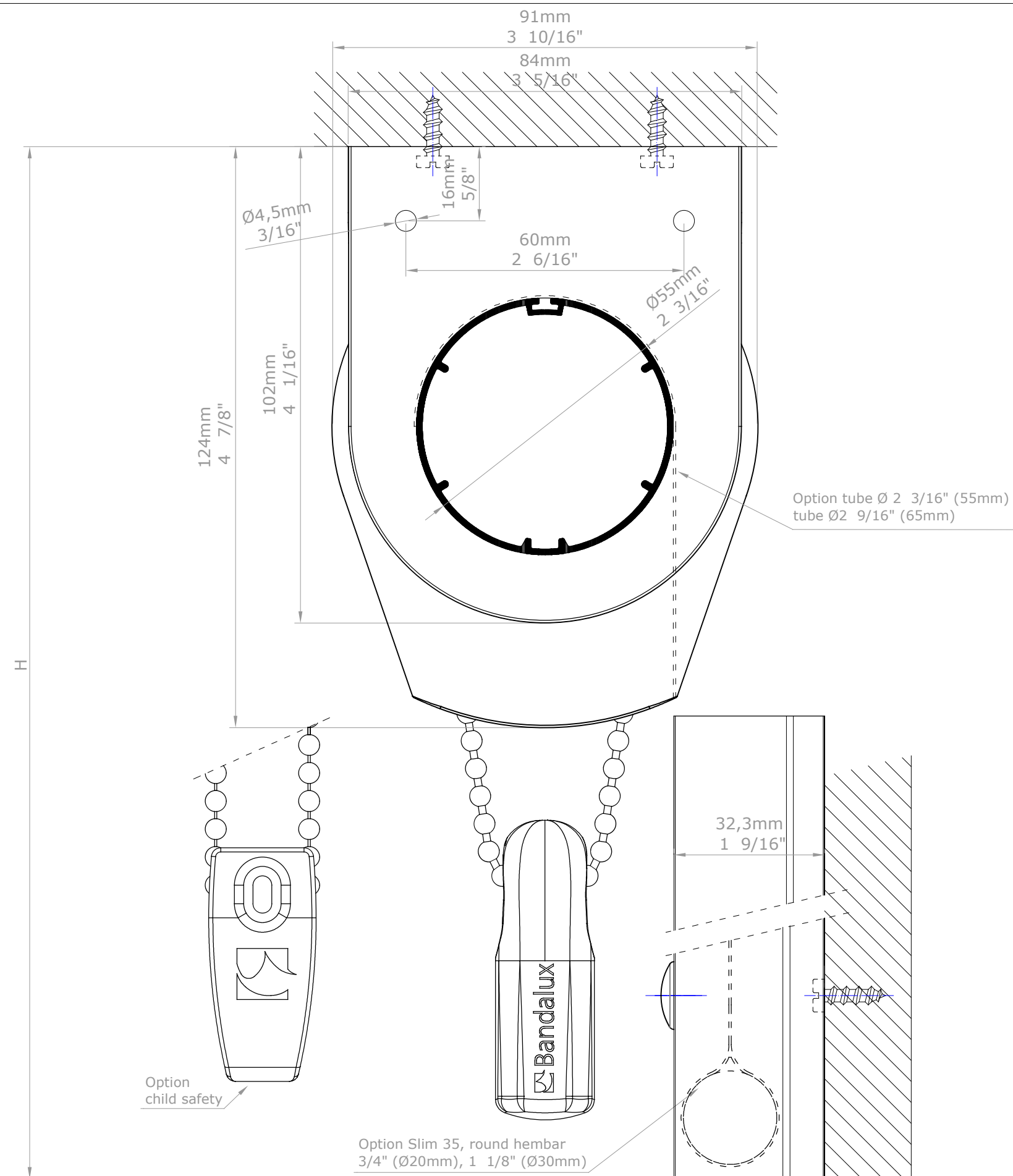


Detail 1:1 round hembar
1 1/8" (Ø30mm)

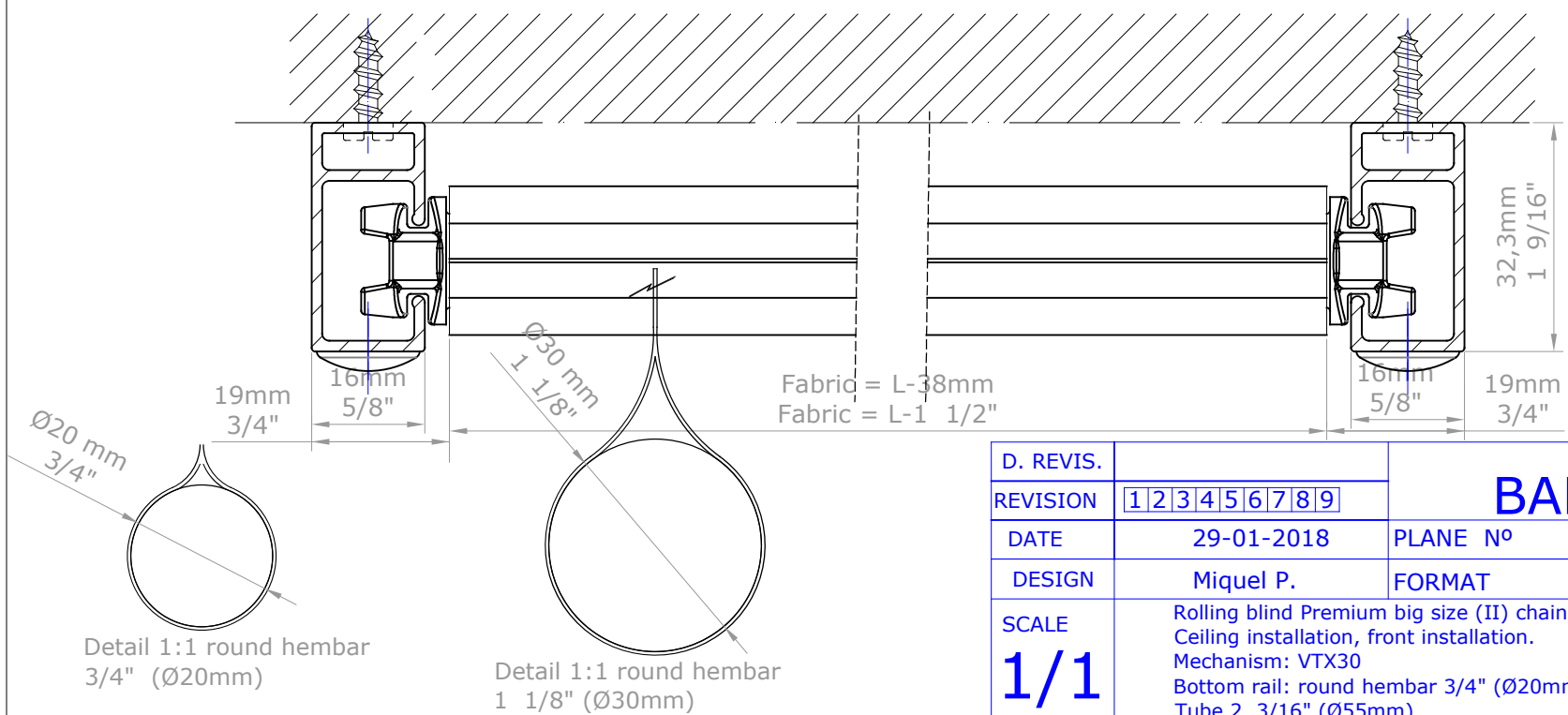
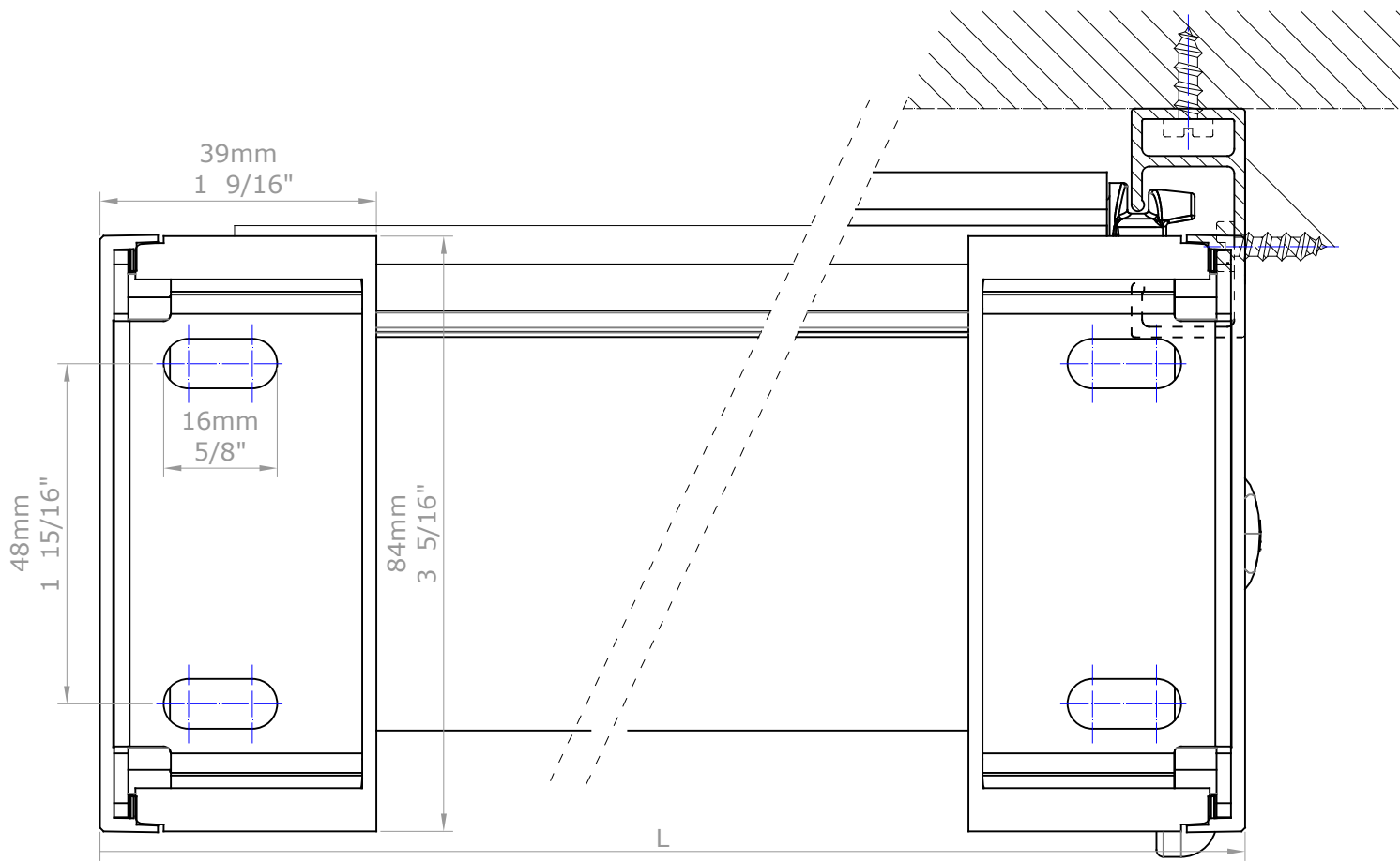
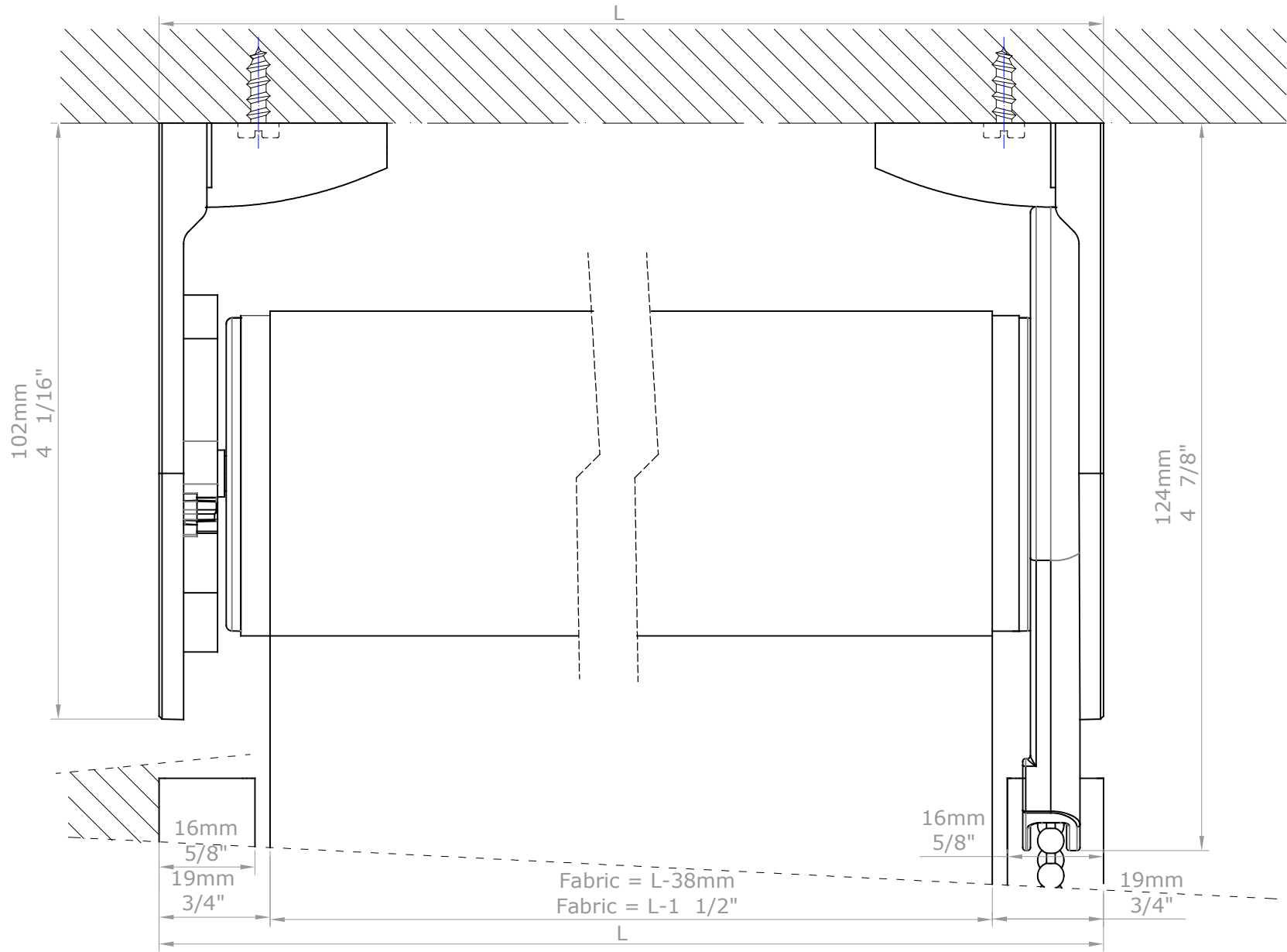
| | | | |
|-----------|---|----------|-----|
| D. REVIS. | | BANDALUX | |
| REVISION | 123456789 | | |
| DATE | 29-01-2018 | PLANE N° | |
| DESIGN | Miquel P. | FORMAT | A-3 |
| SCALE | Rolling blind Premium big size (II) chain U-301 guided Ceiling installation, lateral installation. Mechanism: VTX30 Bottom rail: round hembar 3/4" (Ø20mm) Tube 2 3/16" (Ø55mm) | | |
| 1/1 | | | |



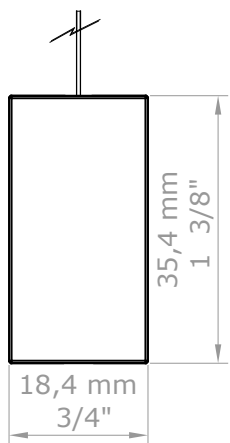
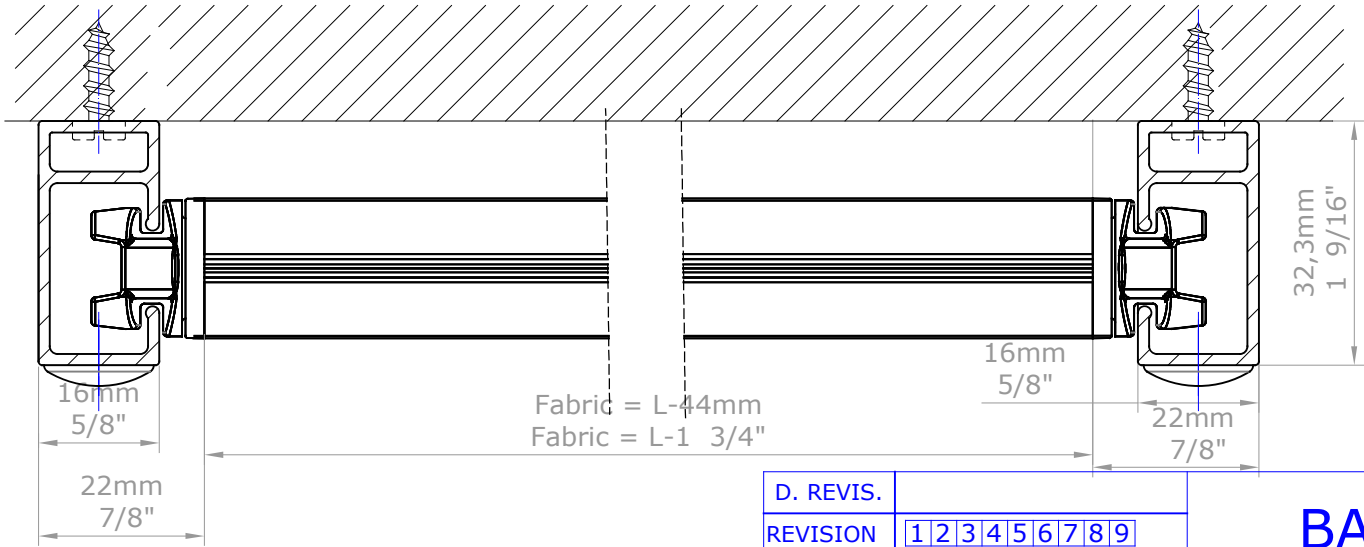
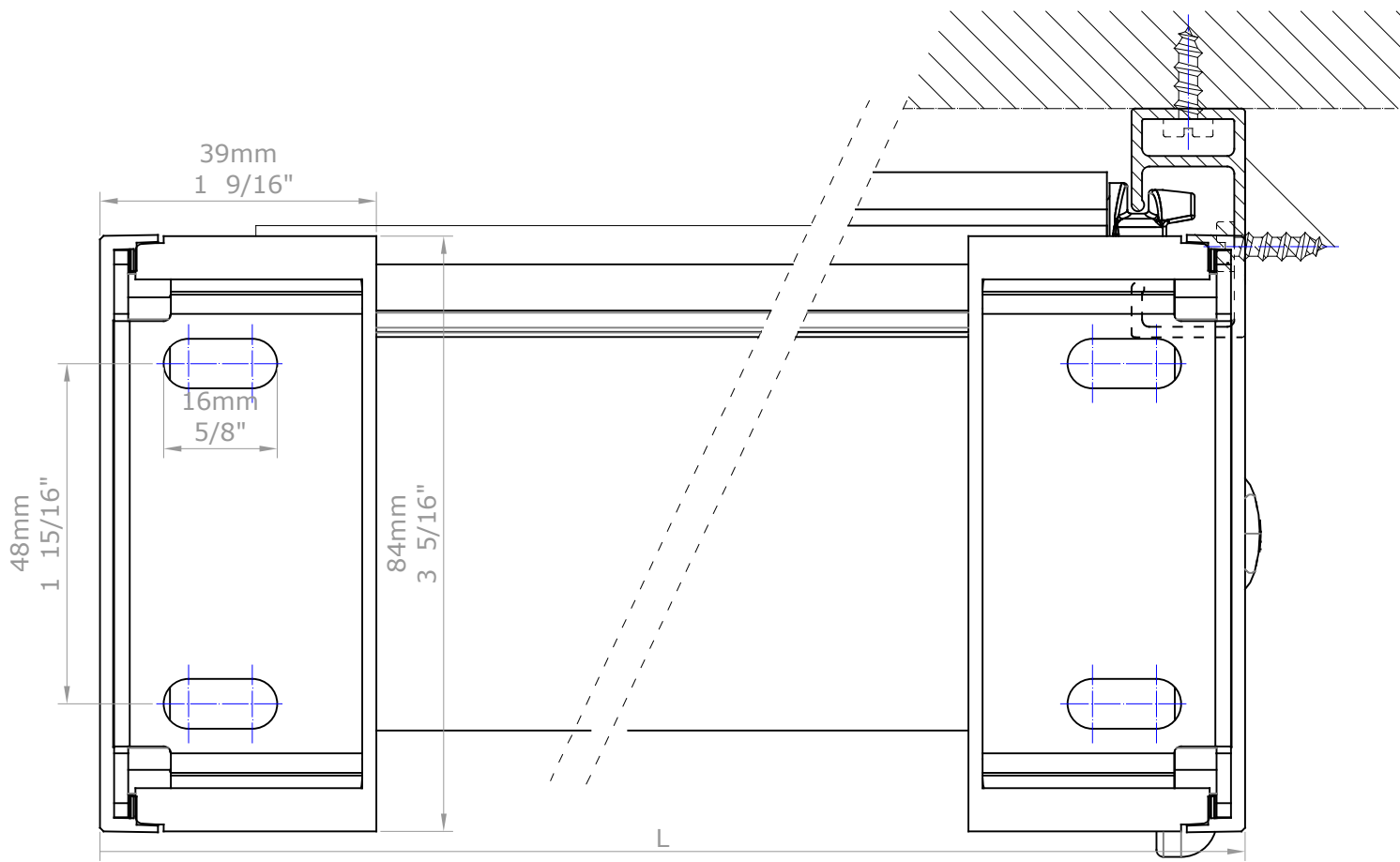
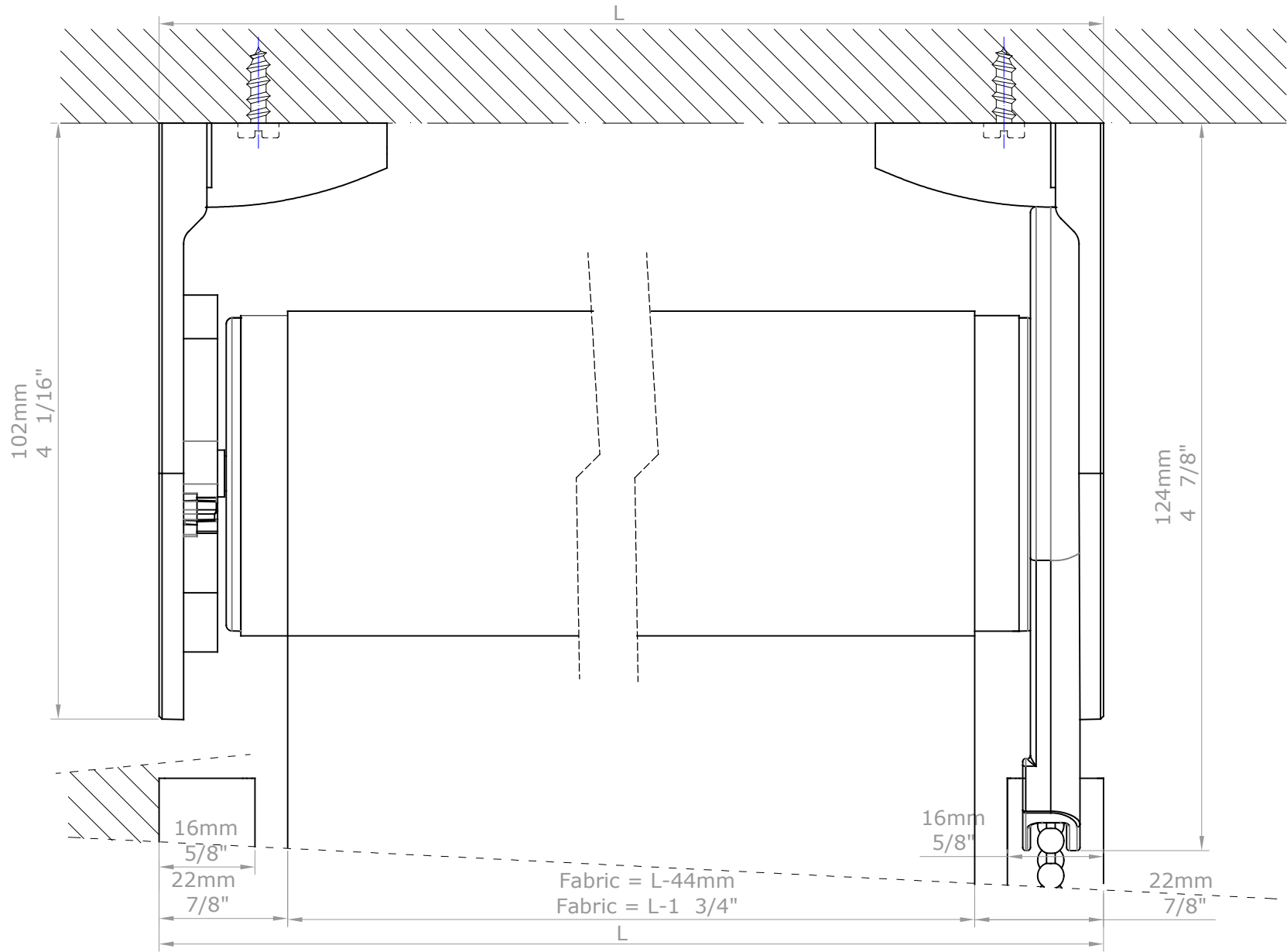
| | | | |
|-----------|---|----------|-----|
| D. REVIS. | | BANDALUX | |
| REVISION | 123456789 | | |
| DATE | 29-01-2018 | PLANE N° | |
| DESIGN | Miquel P. | FORMAT | A-3 |
| SCALE | Rolling blind Premium big size (II) chain U-301 guided Ceiling installation, lateral installation. Mechanism: VTX30 Bottom rail: Slim 35 Tube 2 3/16" (Ø55mm) | | |
| 1/1 | | | |



| | | | |
|------------|---|-----------------|-----|
| D. REVIS. | | BANDALUX | |
| REVISION | 1 2 3 4 5 6 7 8 9 | | |
| DATE | 29-01-2018 | PLANE Nº | |
| DESIGN | Miquel P. | FORMAT | A-3 |
| SCALE | Rolling blind Premium big size (II) chain U-301 guided Ceiling installation, front installation. Mechanism: VTX30 Bottom rail: round hembar 3/4" (Ø20mm) Tube 2 3/16" (Ø55mm) | | |
| 1/1 | | | |

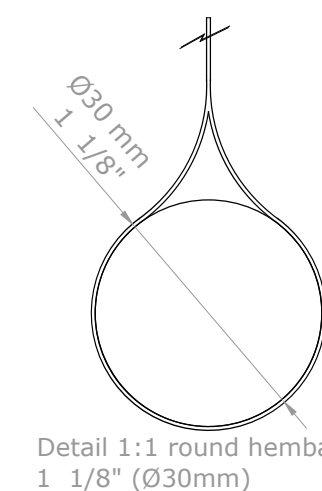
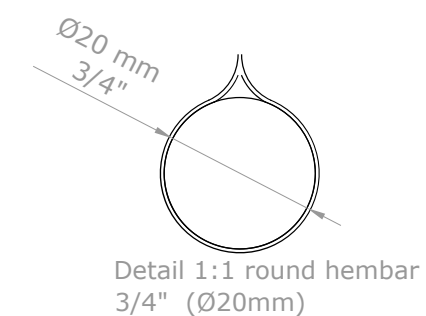
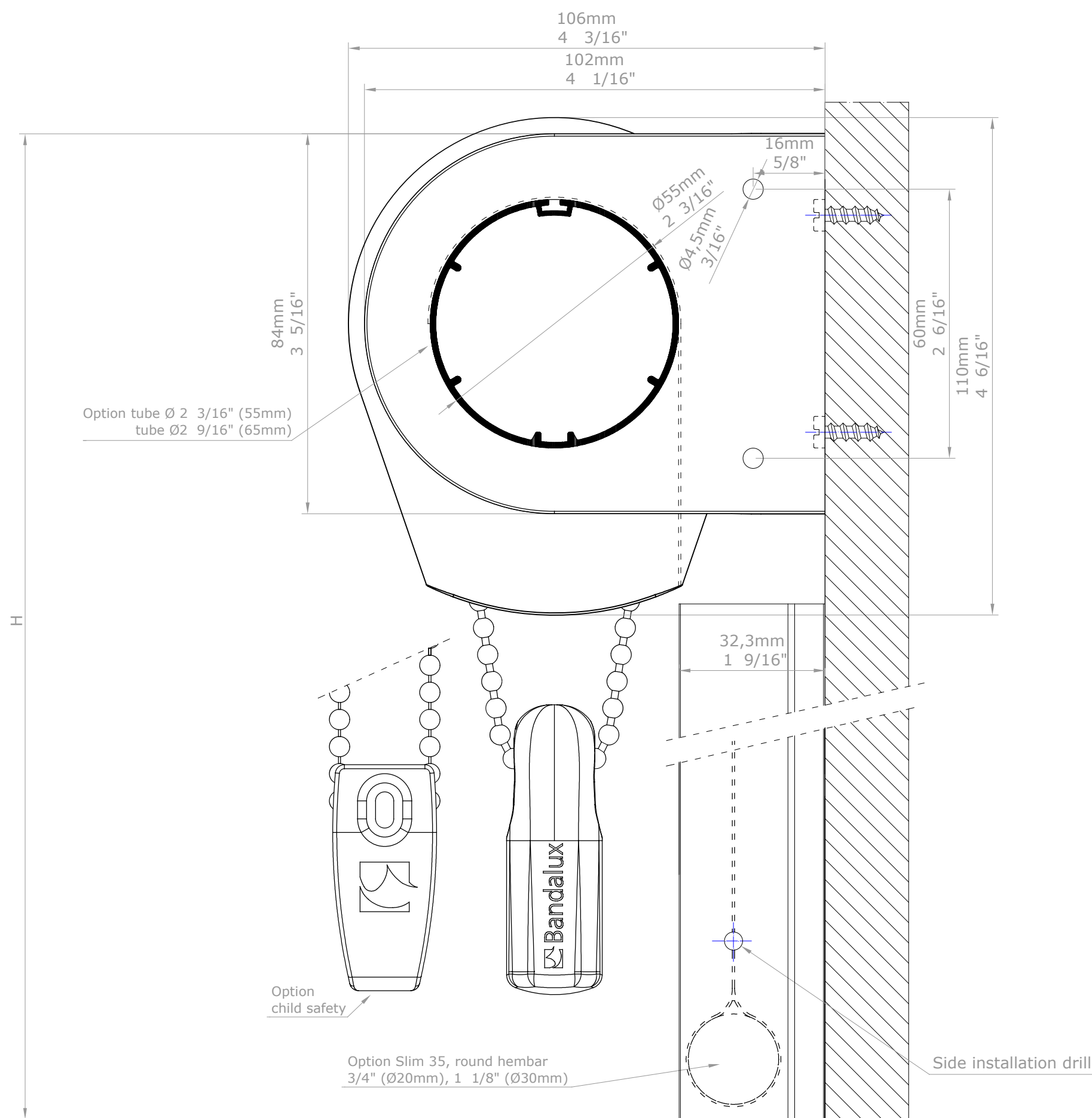


| | | | |
|-----------|---|----------|-----|
| D. REVIS. | | BANDALUX | |
| REVISION | 123456789 | | |
| DATE | 29-01-2018 | PLANE N° | |
| DESIGN | Miquel P. | FORMAT | A-3 |
| SCALE | Rolling blind Premium big size (II) chain U-301 guided Ceiling installation, front installation. Mechanism: VTX30 Bottom rail: round hembar 3/4" (Ø20mm) Tube 2 3/16" (Ø55mm) | | |
| 1/1 | | | |

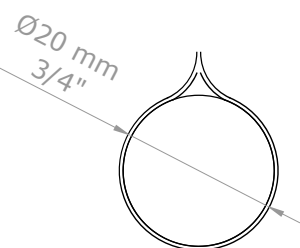
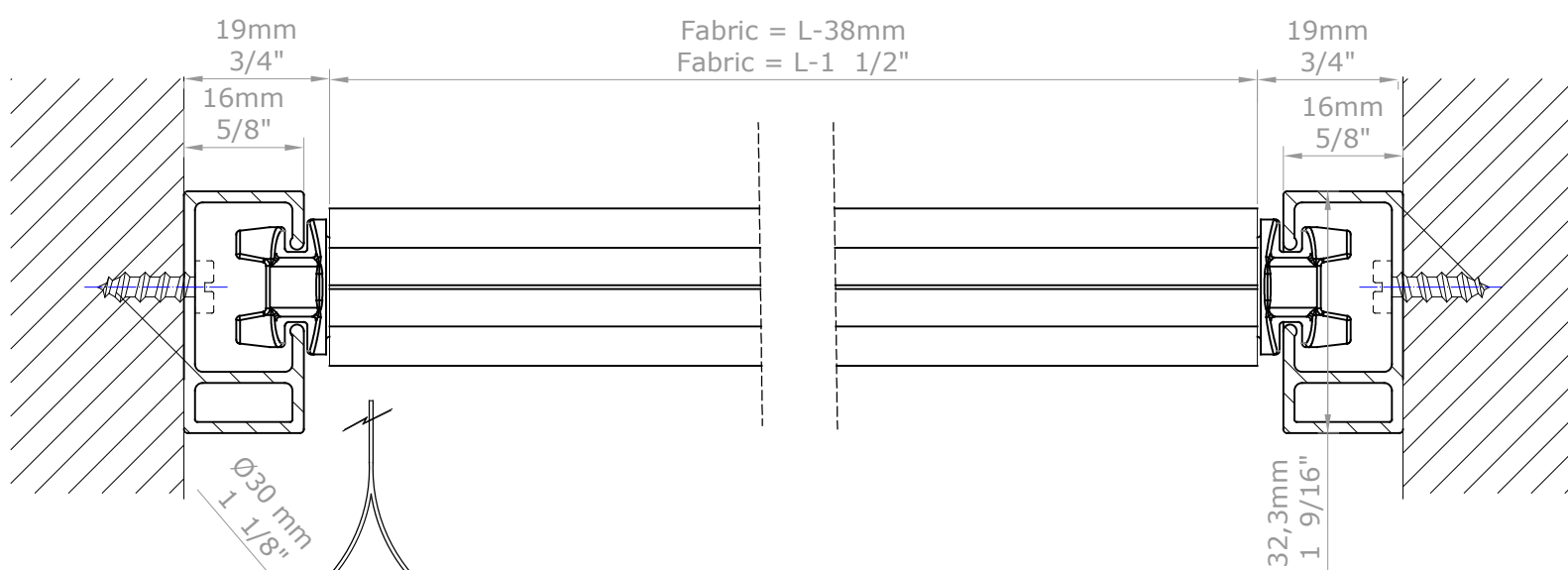
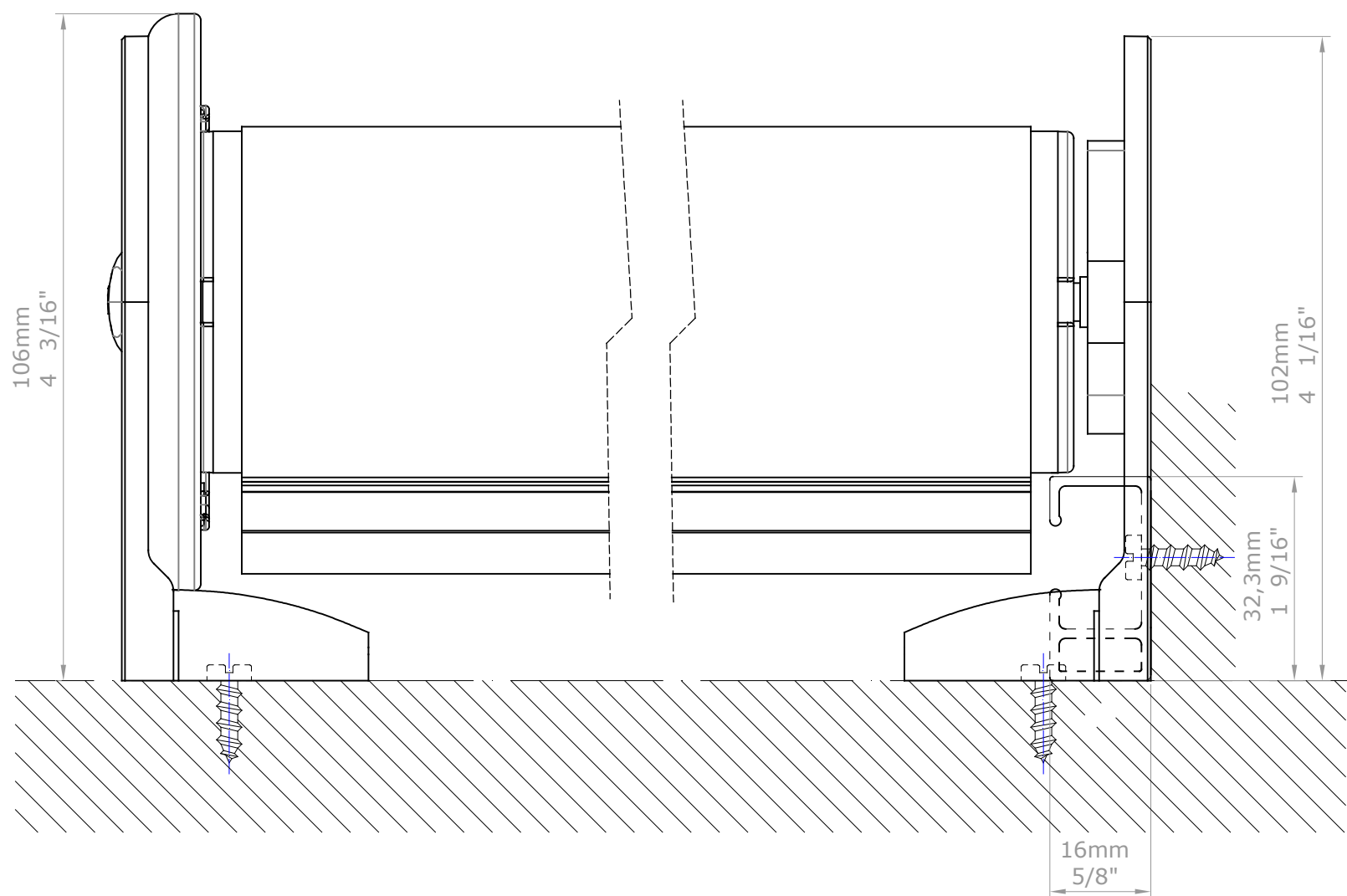
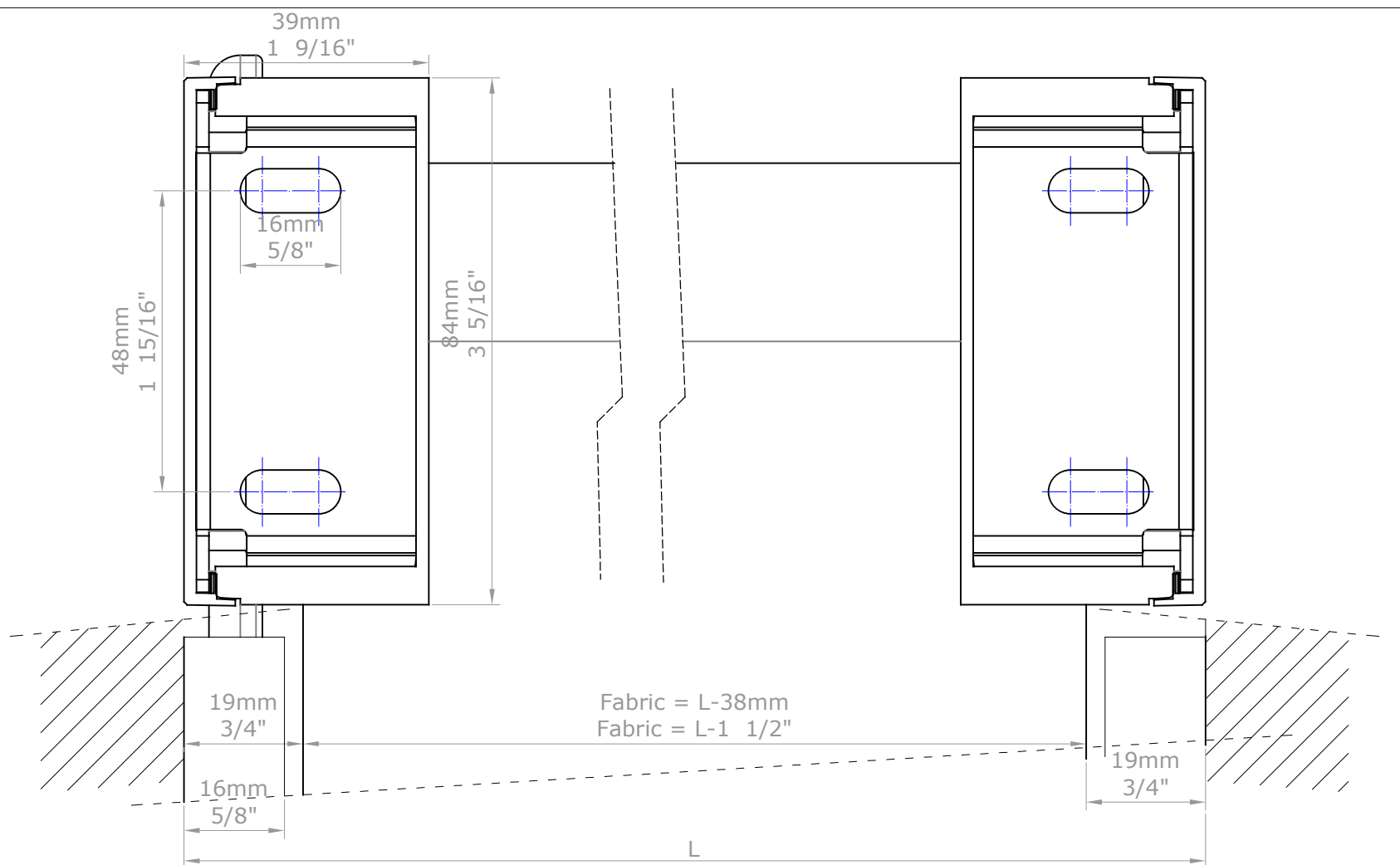


Detail 1:1 bottom rail Slim 35

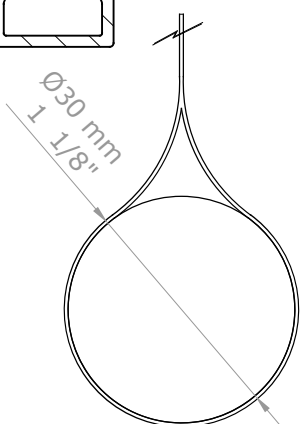
| | | | |
|-----------|---|----------|-----|
| D. REVIS. | | BANDALUX | |
| REVISION | 123456789 | | |
| DATE | 29-01-2018 | PLANE N° | |
| DESIGN | Miquel P. | FORMAT | A-3 |
| SCALE | Rolling blind Premium big size (II) chain U-301 guided Ceiling installation, front installation. Mechanism: VTX30 Bottom rail: Slim 35 Tube 2 3/16" (Ø55mm) | | |
| 1/1 | | | |



| | | | |
|------------|--|-----------------|-----|
| D. REVIS. | | BANDALUX | |
| REVISION | 1 2 3 4 5 6 7 8 9 | | |
| DATE | 29-01-2018 | PLANE N° | |
| DESIGN | Miquel P. | FORMAT | A-3 |
| SCALE | Rolling blind Premium big size (II) chain U-301 guided Wall installation, lateral installation. Mechanism: VTX30 Bottom rail: round hembar 3/4" (Ø20mm) Tube 2 3/16" (Ø55mm) | | |
| 1/1 | | | |



Detail 1:1 round hembar
3/4" (Ø20mm)

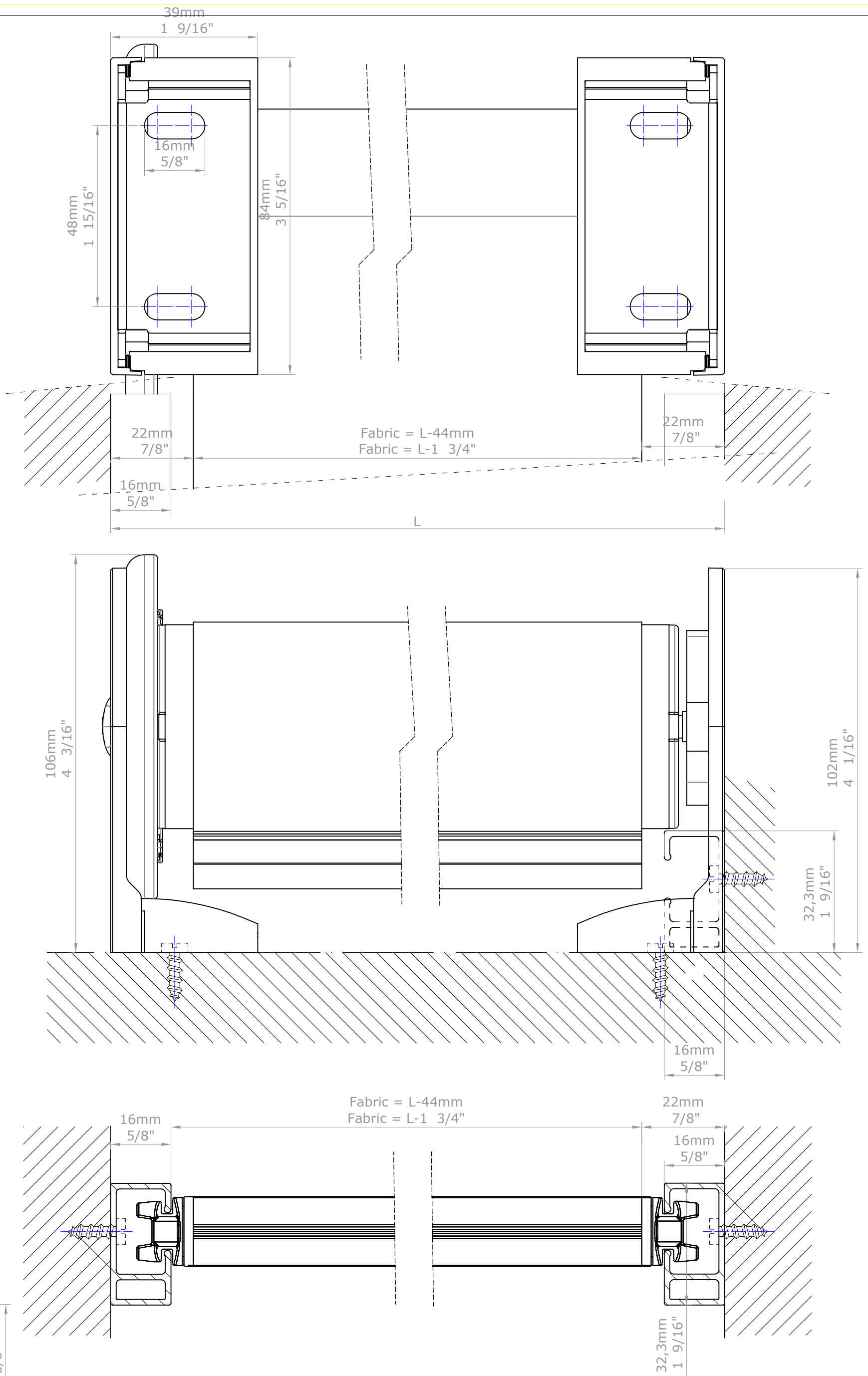


Detail 1:1 round hembar
1 1/8" (Ø30mm)

| | | | |
|-----------|--|----------|-----|
| D. REVIS. | | | |
| REVISION | 123456789 | | |
| DATE | 29-01-2018 | PLANE N° | |
| DESIGN | Miquel P. | FORMAT | A-3 |
| SCALE | Rolling blind Premium big size (II) chain U-301 guided Wall installation, lateral installation. Mechanism: VTX30 Bottom rail: round hembar 3/4" (Ø20mm) Tube 2 3/16" (Ø55mm) | | |

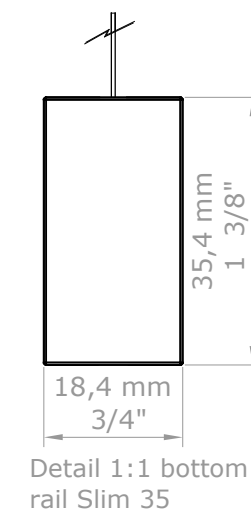
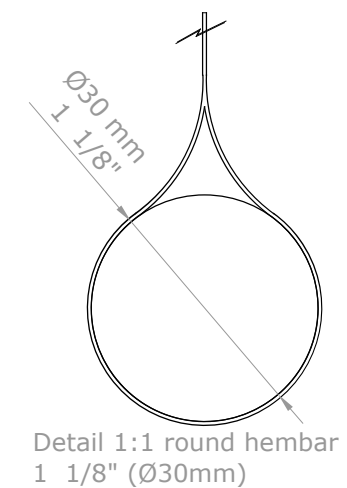
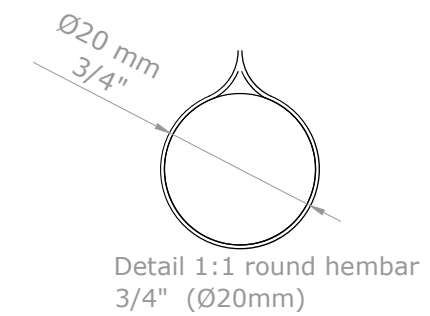
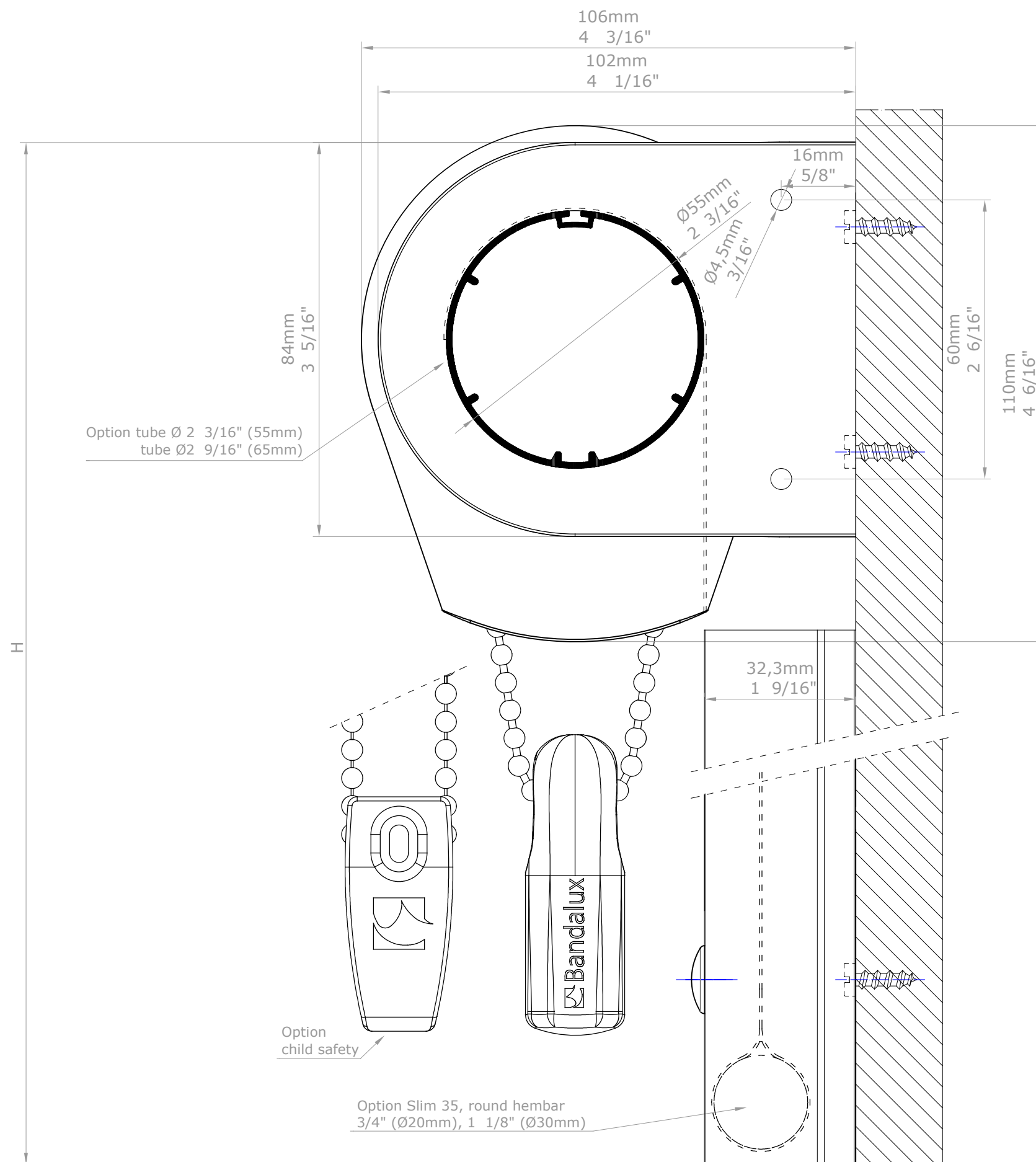
1/1

BANDALUX

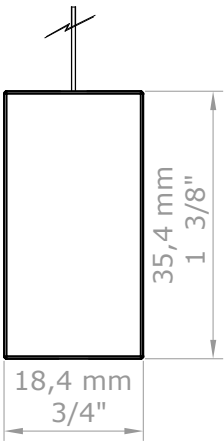


| | | | |
|-----------|--|----------|-----|
| D. REVIS. | BANDALUX | | |
| REVISION | | | |
| DATE | 29-01-2018 | PLANE N° | |
| DESIGN | Miquel P. | FORMAT | A-3 |
| SCALE | Rolling blind Premium big size (II) chain U-301 guided Wall installation, lateral installation. Mechanism: VTX30 Bottom rail: Slim 35 Tube 2 3/16" (Ø55mm) | | |

1/1

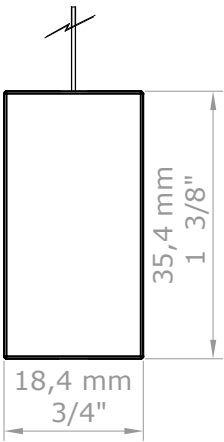


| | | | |
|------------|--|-----------------|-----|
| D. REVIS. | | BANDALUX | |
| REVISION | 1 2 3 4 5 6 7 8 9 | | |
| DATE | 29-01-2018 | PLANE N° | |
| DESIGN | Miquel P. | FORMAT | A-3 |
| SCALE | Rolling blind Premium big size (II) chain U-301 guided Wall installation, front installation. Mechanism: VTX30 Bottom rail: round hembar 3/4" (Ø20mm) Tube 2 3/16" (Ø55mm) | | |
| 1/1 | | | |



Detail 1:1 bottom
rail Slim 35

| | | | |
|---------------------|--|----------|-----|
| D. REVIS. | | BANDALUX | |
| REVISION | 123456789 | | |
| DATE | 29-01-2018 | PLANE Nº | |
| DESIGN | Miquel P. | FORMAT | A-3 |
| SCALE 1/1 | Rolling blind Premium big size (II) chain U-301 guided Wall installation, front installation. Mechanism: VTX30 Bottom rail: Slim 35 Tube 2 3/16" (Ø55mm) | | |



Detail 1:1 bottom
rail Slim 35

| | | | |
|---------------------|--|----------|-----|
| D. REVIS. | | BANDALUX | |
| REVISION | 123456789 | | |
| DATE | 29-01-2018 | PLANE Nº | |
| DESIGN | Miquel P. | FORMAT | A-3 |
| SCALE 1/1 | Rolling blind Premium big size (II) chain U-301 guided Wall installation, front installation. Mechanism: VTX30 Bottom rail: Slim 35 Tube 2 3/16" (Ø55mm) | | |